

## Ceramic Gallery Pieces 2014





## Father Accretion

2014

Ceramic

---

Unique hand-thrown Dark Father Accretion vase with porcelain slip in Complex B glaze.

13"H x 6"D

Contact

---

For inquiries please contact [R@R-AND-COMPANY.COM](mailto:R@R-AND-COMPANY.COM)





## Father Accretion

2014

Ceramic

—

Unique hand-thrown Dark Father Accretion vase with porcelain slip in Complex B glaze.

11.5"H x 5"D

Contact

—

For inquiries please contact [R@R-AND-COMPANY.COM](mailto:R@R-AND-COMPANY.COM)



## Father Accretion

2014

Ceramic

—

Unique hand-thrown Dark Father Accretion vase with porcelain slip in Complex B glaze.

11"H x 6"D

Contact

—

For inquiries please contact [R@R-AND-COMPANY.COM](mailto:R@R-AND-COMPANY.COM)





## Father Accretion

2014

Ceramic

—  
Unique hand-thrown Dark Father Accretion vase with  
porcelain slip in Complex B glaze.

11"H x 5.5"D

Contact

—  
For inquiries please contact [R@R-AND-COMPANY.COM](mailto:R@R-AND-COMPANY.COM)







## Father Accretion

2014

Ceramic

---

Unique hand-thrown Dark Father Accretion vase with porcelain slip in Light Syzurp glaze.

13"H x 6.5"D

Contact

---

For inquiries please contact [R@R-AND-COMPANY.COM](mailto:R@R-AND-COMPANY.COM)





## Father Accretion

2014

Ceramic

—  
Unique hand-thrown Dark Father Accretion vase with  
porcelain slip in Light Piere glaze.

7.5"H x 4"D

Contact

—  
For inquiries please contact [R@R-AND-COMPANY.COM](mailto:R@R-AND-COMPANY.COM)





## Father Accretion

2014

Ceramic

—  
Unique hand-thrown Dark Father Accretion vase with  
porcelain slip in Lucky Piere glaze.

9"H x 4"D

Contact

—  
For inquiries please contact [R@R-AND-COMPANY.COM](mailto:R@R-AND-COMPANY.COM)







## Father Accretion

2014

Ceramic

---

Unique hand-thrown Dark Father Accretion vase with porcelain slip in Light Syzurp glaze.

14"H x 6.5"D

Contact

---

For inquiries please contact [R@R-AND-COMPANY.COM](mailto:R@R-AND-COMPANY.COM)





## Father Accretion

2014

Ceramic

---

Unique hand-thrown Dark Father Accretion vase with porcelain slip in Syzurp glaze.

13"H x 5.5"D

Contact

---

For inquiries please contact [R@R-AND-COMPANY.COM](mailto:R@R-AND-COMPANY.COM)





## Father Accretion

2014

Ceramic

—  
Unique hand-thrown Dark Father Accretion vase with  
porcelain slip in Heavy Syzurp glaze.

14"H x 5.5"D

Contact

—  
For inquiries please contact [R@R-AND-COMPANY.COM](mailto:R@R-AND-COMPANY.COM)





## Father Accretion

2014

Ceramic

—  
Unique hand-thrown Red Father Accretion vase with  
porcelain slip in Angelyne glaze with gold neck.

12"H x 5.5"D

Contact

—  
For inquiries please contact [R@R-AND-COMPANY.COM](mailto:R@R-AND-COMPANY.COM)







## Father Accretion

2014

Ceramic

—  
Unique hand-thrown Red Father Accretion vase with  
porcelain slip in Angelyne glaze with gold neck.

9.25"H x 5.25"D

Contact

—  
For inquiries please contact [R@R-AND-COMPANY.COM](mailto:R@R-AND-COMPANY.COM)





## Father Accretion

2014

Ceramic

—  
Unique hand-thrown Red Father Accretion vase with  
porcelain slip in Angelyne glaze with gold neck.

9.25"H x 4.75"D

Contact

—  
For inquiries please contact [R@R-AND-COMPANY.COM](mailto:R@R-AND-COMPANY.COM)





## Father Accretion

2014

Ceramic

—  
Unique hand-thrown Red Father Accretion vase with  
porcelain slip in Angelyne glaze with gold neck.

8"H x 5"D

Contact

—  
For inquiries please contact [R@R-AND-COMPANY.COM](mailto:R@R-AND-COMPANY.COM)





## Father Accretion

2014

Ceramic

---

Unique hand-thrown Father Accretion vase with porcelain slip in CHG 10.0 glaze.

15"H x 7"D

Contact

---

For inquiries please contact [R@R-AND-COMPANY.COM](mailto:R@R-AND-COMPANY.COM)





## Father Accretion

2014

Ceramic

---

Unique hand-thrown Father Accretion vase with  
porcelain slip in CHG 15.01 glaze.

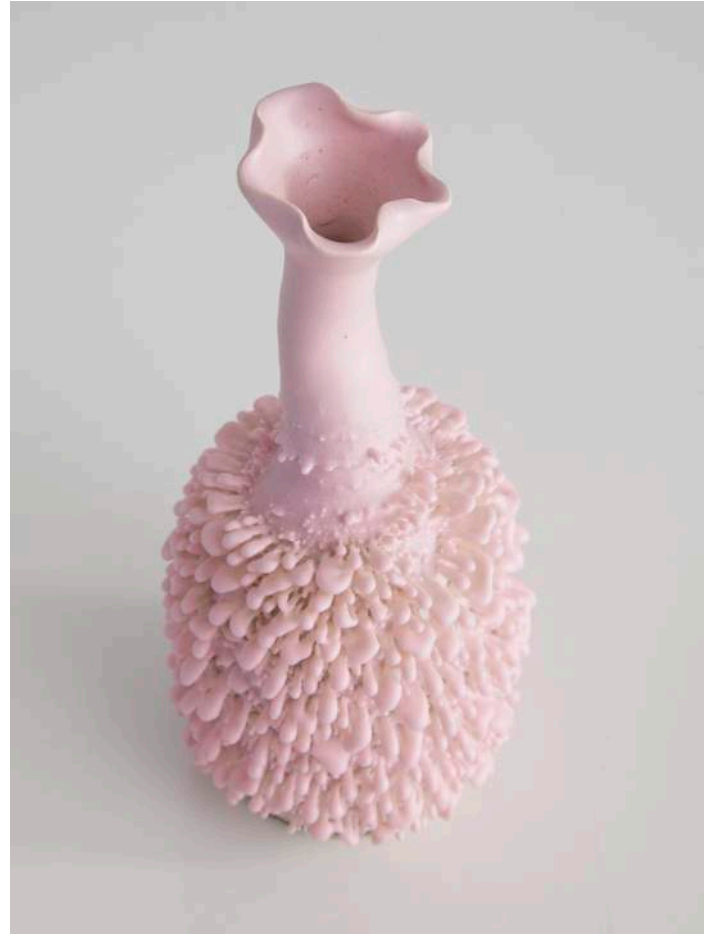
7"H x 3.75"D

Contact

---

For inquiries please contact [R@R-AND-COMPANY.COM](mailto:R@R-AND-COMPANY.COM)





## Father Accretion

2014

Ceramic

---

Unique hand-thrown Father Accretion vase with  
porcelain slip in H2G 14.0 glaze.

8.5"H x 4.5"D

Contact

---

For inquiries please contact [R@R-AND-COMPANY.COM](mailto:R@R-AND-COMPANY.COM)







## Father Accretion

2014

Ceramic

—  
Unique hand-thrown Father Accretion vase with  
porcelain slip in Complex B glaze.

9.5"H x 4"D

Contact

—  
For inquiries please contact [R@R-AND-COMPANY.COM](mailto:R@R-AND-COMPANY.COM)





## Father Accretion

2014

Ceramic

---

Unique hand-thrown Father Accretion vase with porcelain slip in Light Syzurp glaze.

15.5"H x 6"D

Contact

---

For inquiries please contact [R@R-AND-COMPANY.COM](mailto:R@R-AND-COMPANY.COM)





## Father Accretion

2014

Ceramic

---

Unique hand-thrown Father Accretion vase with porcelain slip in CHG 15.2 glaze.

17.25"H x 6.25"D

Contact

---

For inquiries please contact [R@R-AND-COMPANY.COM](mailto:R@R-AND-COMPANY.COM)





## Mother Accretion

2014

Ceramic

—  
Unique hand-thrown Dark Mother Accretion vase with  
porcelain slip in Cloudy Matte Turquoise glaze.

6"H x 6"D

Contact

—  
For inquiries please contact [R@R-AND-COMPANY.COM](mailto:R@R-AND-COMPANY.COM)





## Mother Accretion

2014

Ceramic

—  
Unique hand-thrown Dark Mother Accretion vase with  
porcelain slip in Cloudy Matte Turquoise glaze.

6"H x 6"D

Contact

—  
For inquiries please contact [R@R-AND-COMPANY.COM](mailto:R@R-AND-COMPANY.COM)





## Mother Accretion

2014

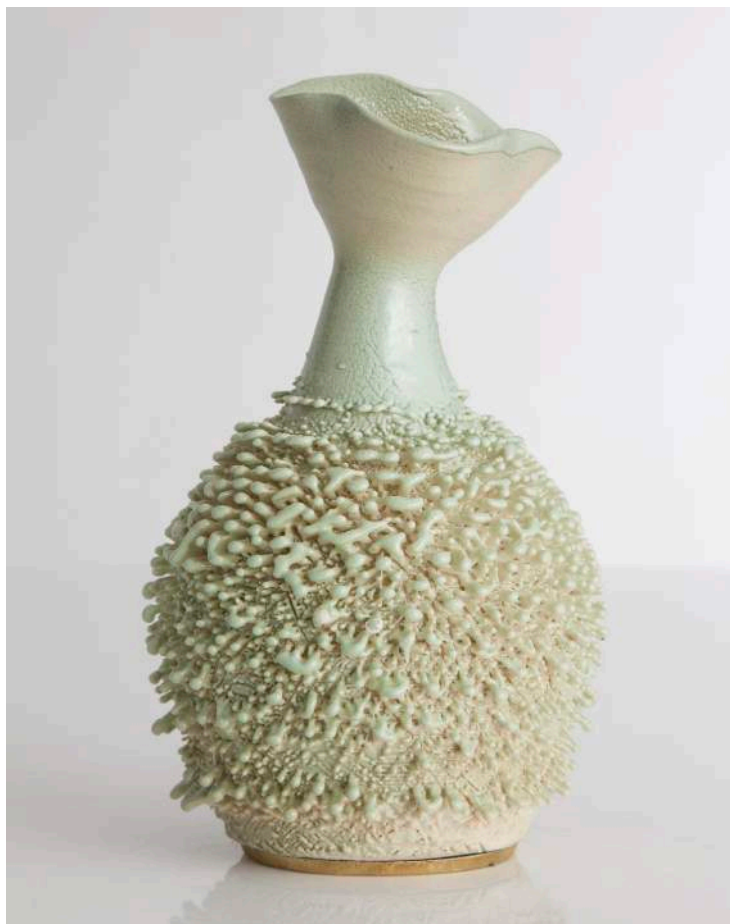
Ceramic

—  
Unique hand-thrown Dark Mother Accretion vase with  
porcelain slip in CHG 15.3 glaze.

6.75"H x 4.25"D

Contact

—  
For inquiries please contact [R@R-AND-COMPANY.COM](mailto:R@R-AND-COMPANY.COM)



## Father Accretion

2014

Ceramic

---

Unique hand-thrown Father Accretion vase with porcelain slip in CHG 15.12 glaze.

6.5"H x 4"D

Contact

---

For inquiries please contact [R@R-AND-COMPANY.COM](mailto:R@R-AND-COMPANY.COM)





## Father Accretion

2014

Ceramic

---

Unique hand-thrown Father Accretion vase with porcelain slip in CHG 10.0 glaze.

15"H x 6"D

Contact

---

For inquiries please contact [R@R-AND-COMPANY.COM](mailto:R@R-AND-COMPANY.COM)





## Mother Accretion

2014

Ceramic

—  
Unique hand-thrown Mother Accretion vase with porcelain slip in CHG 15.7 glaze.

8"H x 6.75"D

Contact

—  
For inquiries please contact [R@R-AND-COMPANY.COM](mailto:R@R-AND-COMPANY.COM)







## Mother Accretion

2014

Ceramic

—  
Unique hand-thrown Mother Accretion vase with porcelain slip in CHG 10.0 glaze.

9"H x 4.5"D

Contact

—  
For inquiries please contact [R@R-AND-COMPANY.COM](mailto:R@R-AND-COMPANY.COM)







## Mother Accretion

2014

Ceramic

—  
Unique hand-thrown Mother Accretion vase with porcelain slip in CHG 15.2 glaze.

8.25"H x 4.75"D

Contact

—  
For inquiries please contact [R@R-AND-COMPANY.COM](mailto:R@R-AND-COMPANY.COM)





## Father Accretion

2014

Ceramic

—  
Unique hand-thrown Father Accretion vase with porcelain slip in CHG 15.6 glaze.

9.75"H x 5"D

Contact

—  
For inquiries please contact [R@R-AND-COMPANY.COM](mailto:R@R-AND-COMPANY.COM)



## Mother Accretion

2014

Ceramic

---

Unique hand-thrown Mother Accretion vase with porcelain slip in CHG 15.01 glaze.

8.5"H x 7.5"D

Contact

---

For inquiries please contact [R@R-AND-COMPANY.COM](mailto:R@R-AND-COMPANY.COM)



## Father Accretion

2014

Ceramic

—  
Unique hand-thrown Father Accretion vase with porcelain slip in CHG 15.12 glaze.

16"H x 5.5"D

Contact

—  
For inquiries please contact [R@R-AND-COMPANY.COM](mailto:R@R-AND-COMPANY.COM)







## Father Accretion

2014

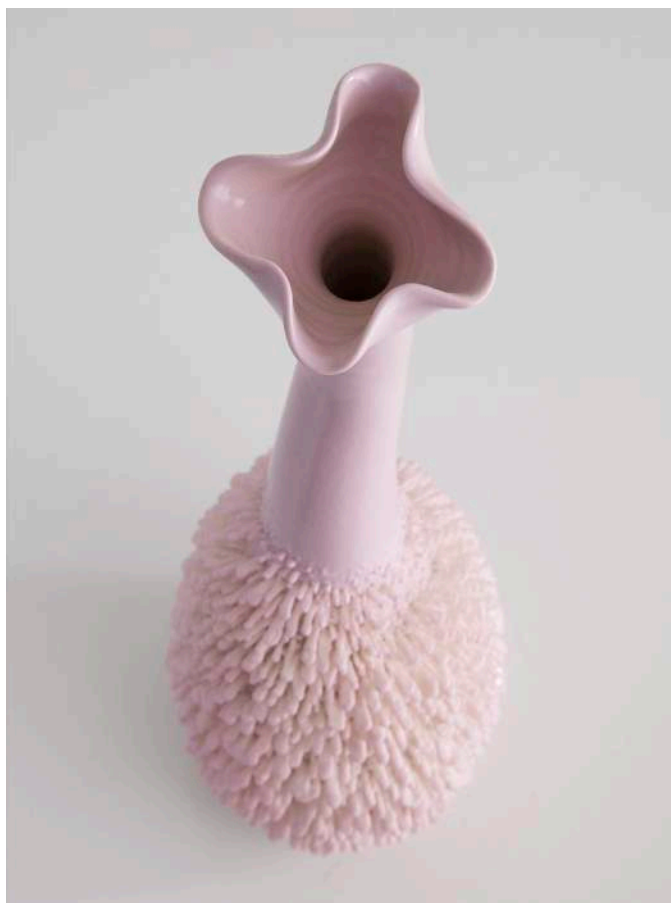
Ceramic

—  
Unique hand-thrown Father Accretion vase with porcelain slip in CHG 15.1 glaze.

15.25"H x 5.75"D

Contact

—  
For inquiries please contact [R@R-AND-COMPANY.COM](mailto:R@R-AND-COMPANY.COM)



## Father Accretion

2014

Ceramic

---

Unique hand-thrown Father Accretion vase with porcelain slip in H2G 14.0 glaze.

20"H x 6.25"D

Contact

---

For inquiries please contact [R@R-AND-COMPANY.COM](mailto:R@R-AND-COMPANY.COM)

